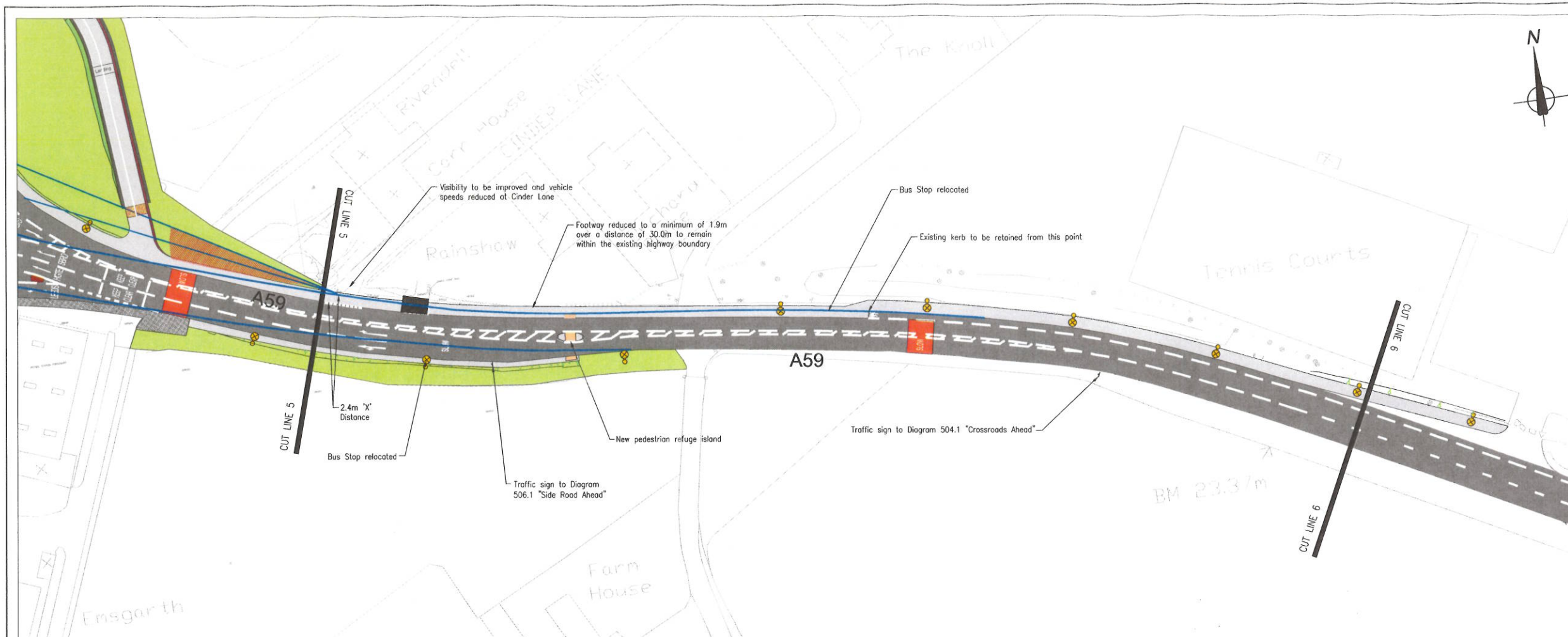


ANNEX A



Key Plan:



Key:

- Carriageway
- Footway/ Shared use foot and cycleway
- Maintenance bay for CCTV mast
- New traffic islands
- Proposed Green Surfacing
- Proposed Red Surfacing
- Grass area with landscaping
- Proposed Grass Verge
- Proposed Embankment
- Controlled Crossing Tactile paving
- Uncontrolled Crossing Tactile paving
- Corduroy Hazard Warning paving
- Indicative extent of new street lighting
- Existing junction footprint
- CCTV Mast
- Proposed Embankments
- Tree Root Protection Area

Notes:

This drawing should be read in conjunction with the following drawings:
THAYPR-PB-102, THAYPR-PB-103, THAYPR-PB-104, THAYPR-PB-105.
Subway dimensions are in accordance to TD36/93. Refer to End Product Specification for details.

| Rev | By | Chkd | Apprd | Date | Description |
|-----|----|------|-------|-------|------------------|
| 1 | RB | LC | CC | 09-03 | FOR CONSTRUCTION |



Halcrow Group Limited
22 Lendal, York, North Yorkshire YO1 8AA
+44 (0)1904 556600
www.halcrow.com

Halcrow

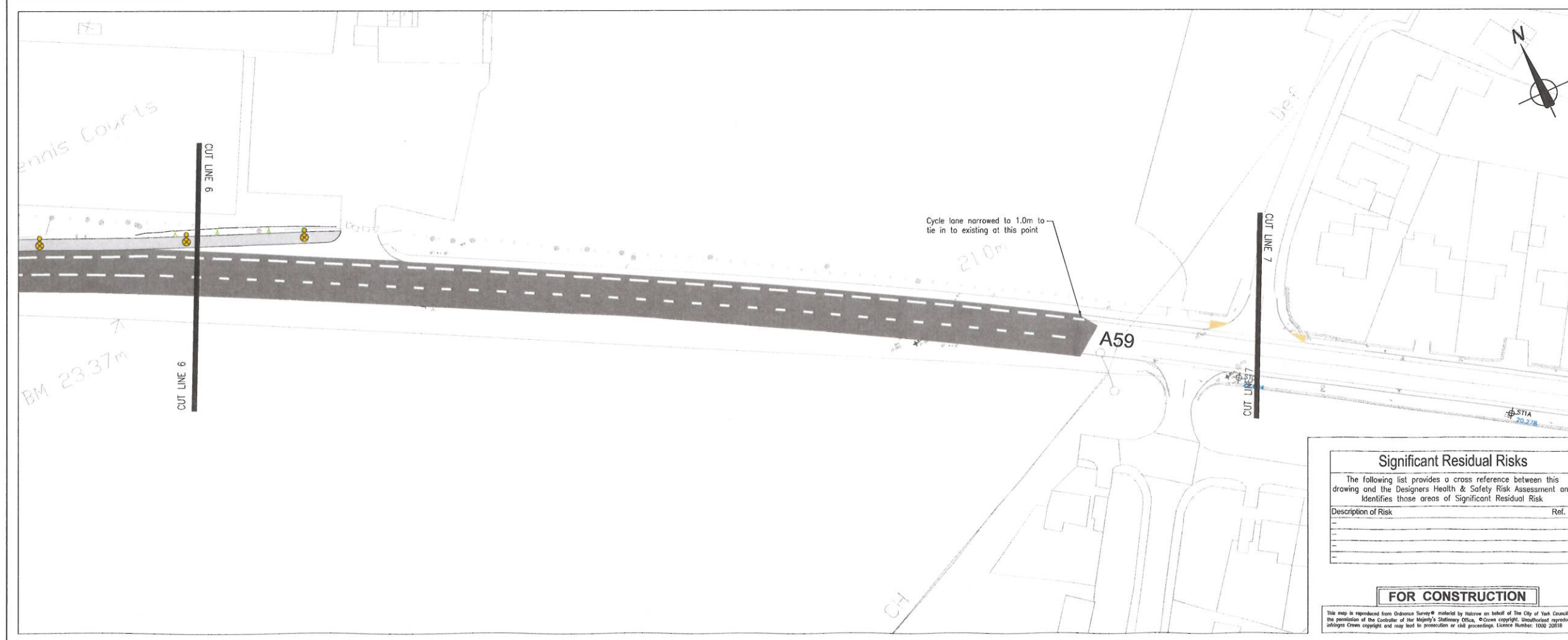
Project
ACCESS YORK PARK AND RIDE

Drawing
**POPPLETON BAR
GENERAL ARRANGEMENT
SHEET 4 OF 4
A59 TO WESTVIEW CLOSE**

Drawn by: C. GRIFFIN Date: 31/05/12
Checked by: L. CABLE Date: 10/08/12
Approved by: C. COLLINGS Date: 11/10/12

Drawing No. THAYPR-PB-105 Revision 1

Drawing Scale: 1:500 at A1



Significant Residual Risks

The following list provides a cross reference between this drawing and the Designers Health & Safety Risk Assessment and identifies those areas of Significant Residual Risk

| Description of Risk | Ref. |
|---------------------|------|
| | |
| | |
| | |
| | |
| | |

FOR CONSTRUCTION

This map is reproduced from Ordnance Survey © material by permission of the Controller of Her Majesty's Stationery Office. © Crown copyright. Unauthorised reproduction infringes Crown copyright and may lead to prosecution or civil proceedings. Licence Number: 1000 20118